



Presentation Outline

- ▶ 1. Student Health Services
- ▶ 2. Health Insurance Choices
- ▶ 3. Financial Aid Coverage for Student Health charges
- ▶ 4. Mandatory Entry Immunization Requirements
- ▶ 5. Important Dates



Serving All Students at UCSB

- ▶ **ALL students can use our medical services** just as they would their regular doctor's office and urgent care center.
- ▶ Our facility is **fully-accredited**, staffed by board-certified physicians, nurse practitioners, physician assistants, advice nurses, dietitians, optometrists, dentists, physical therapists, pharmacists, lab, and x-ray technicians, psychiatrists, social workers and counselors.
- ▶ **Services FREE to all students**
 - Advice Nurse
 - Social Workers
 - Alcohol Drug Counselors



Student Health Welcome Video

[Click Here](#)

Student Health Center on campus Hospital 3 miles away Ambulance based on campus

5



Make us your medical home ...

Student Health Services Are Confidential

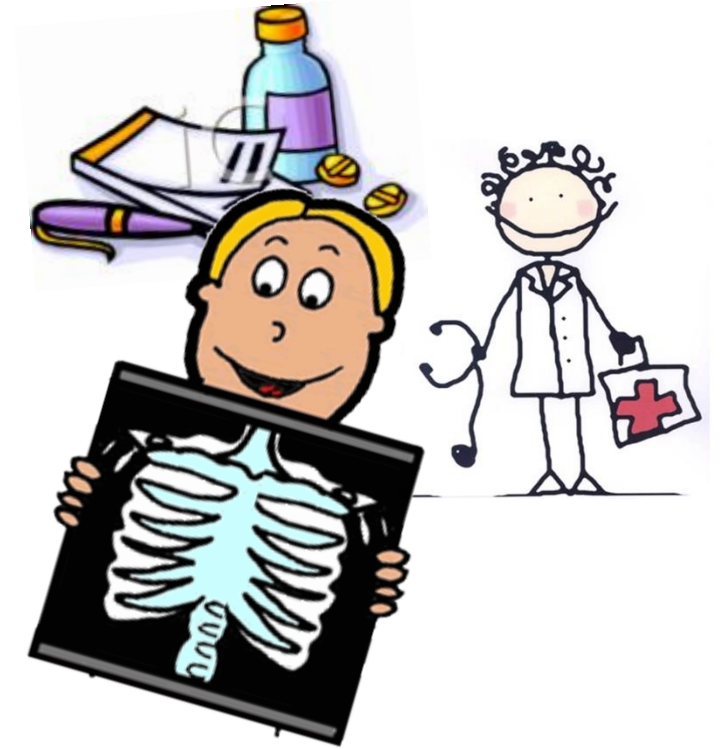
- ▶ Information cannot be released without a student's written consent.
- ▶ Bring your past medical records and prescriptions with you, or have them sent to us directly.



Services Available at SHS



Alcohol Drug Counselors	Pharmacy
Advice Nurse	Physical Therapy
Behavioral Health	Primary Care
Dental Care	Social Workers
Eye Care	Travel Clearance
Lab	Urgent Care
Minor Surgery	Gynecology
Nutrition	LGBTQIA Health
Orthopedics	X-Ray



Health Insurance Video

[Click Here](#)

Health Insurance Choices



Unlimited Student Health Visits
Includes Vision & Dental

or

Private Health Insurance

(must apply for waiver)

with or without

Filling in the... **GAP**
Gaucho Access Plan

Student Health Charges*

Service	Enrolled in GHI or Waived <u>with</u> GAP**	Waived <u>without</u> GAP
Medical & Urgent Care Visits	\$0	\$65
Psychiatry Visit	\$0	\$85 - \$145
In-House Lab	\$0	\$16 - \$36
In-House X-Ray	\$0	\$70 - \$170



*Prices are subject to change.
 **GAP costs \$480/year.



Your Financial Aid may fully cover GHI costs

Awards

Gift Aid Eligibility ?

Sample Financial Aid Award Letter

Type of Aid	Fall	Winter	Spring
<u>Cal Grant A Fee</u>	\$4,098	\$4,098	\$4,098
<u>Federal Pell Grant</u>	\$1,939	\$1,938	\$1,938
<u>UCSB Grant</u>	\$1377	\$1377	\$1377
<u>Gaucho Health Insurance Grant</u>	\$1,017	\$1,017	\$1,016



Clicking on the grant would link to the same glossary definition as UAL.

Other Important Considerations

(before waiving Gaucho Health Insurance)



- ▶ **Transportation difficulties** if insurance only covers in another county
 - ▶ Closest Kaiser facilities are in Oxnard/Ventura - 43 miles south of UCSB
 - ▶ Many Medi-Cal and Covered California plans only have emergency services unless you are in your home county
 - ▶ It takes a lot of time to drive to another clinic, wait for your appointment, and then get back to campus

- ▶ **Consider purchasing UCSB's GAP coverage** if you waive GHI

- ▶ **No dental or vision care** with other insurance plan:



Entry Immunization Requirements

- ▶ The University of California **requires** that all entering students...
 - (1) Complete a tuberculosis (TB) screening questionnaire*
 - (2) Provide documentation of vaccination or immunity to certain infectious diseases*
- ▶ This is one of the STEPS TO ENROLLMENT through the Admissions website.
- ▶ Students must enter the dates of their immunizations through our confidential GATEWAY portal on the Student Health website using their UCSBnet ID.



We encourage all students to receive the Meningococcal B vaccines before September!

Important Points

September 1 deadline

- ▶ **Submit Entry Immunization records**
- ▶ **GHI Waiver Applications Due**
(Waivers after 9/1/17 assessed a \$50 late fee; Final Deadline 9/14/17)



Your student may give you permission to submit these for them as an "Authorized Representative" through their PROFILE in our confidential GATEWAY portal.

Questions for us?

There will be tables outside for questions after the presentation.

(805) 893-5361

<http://studenthealth.sa.ucsb.edu/>

